

Prismo Traffic Products

FLEXILINE

Preformed thermoplastic road markings

Flexiline is the perfect solution to permanently marking car parks, roads, cycleways, airports, docks and playgrounds etc.

Quick and easy to apply from standard road markings, to personalised logos and graphics.

Flexiline provides all your requirements, for hard wearing, quick and easily applied surface marking solutions at any time of the year.

With the performance of hot applied thermoplastic, these markings will last for years!

Flexiline provides exceptionally clean cut, crisp markings that can be trafficked within minutes of application.

Flexiline is available in preformed lines, letters, numbers and symbols. It is one of the fastest ways to permanently re-instate road markings, or produce new markings, providing excellent cost effectiveness.

Flexiline requires just one person and a gas torch to apply.



Quality Reflects



STANDARD ROAD MARKINGS

Cycle logo



Preformed size
700mm
1200mm

Disabled logo



Preformed size
800mm
1400mm

Walking Man logo



Preformed size
980mm

Mother and child logo



Preformed size
1400mm

Arrows

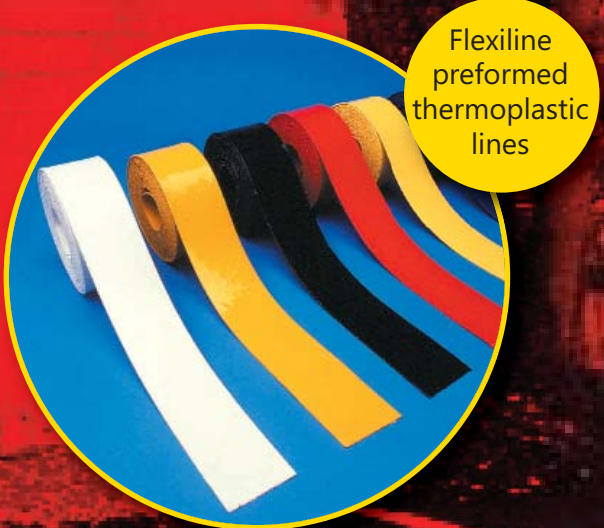


Preformed size
2-6 metres

Letters & Numerals



Preformed size
300mm-2800mm



- White markings incorporate reflective glass beads. For immediate reflectivity apply further beads during heating
- Independently road tested in accordance to BSEN 1824, performance characterises to BSEN 1463
- Fully complies with the Road and Streetworks Act 1991 code of practice for reinstatement.

Crossing triangles conforming to TSRGD



A small selection of logos available are represented please enquire for full range available.

Key Benefits	
Permanent marking	Wide range of markings available
Quick and easy to apply	Durable
Clean, crisp road markings in minutes	Wide range of colours

Typical Applications	
Highway marking reinstatement	Airports
New markings	Corporate logos
Car Parks	Playgrounds
Footpath	Hard sports surfaces
Cycleways	

PLAYGROUND MARKINGS

Perfect for playgrounds, tough enough to last for years

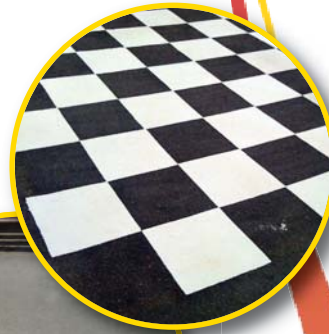
Ideal for producing playground games and shapes to any design, any shape.

Did you know that 20% of a child's school days are spent in the playground.

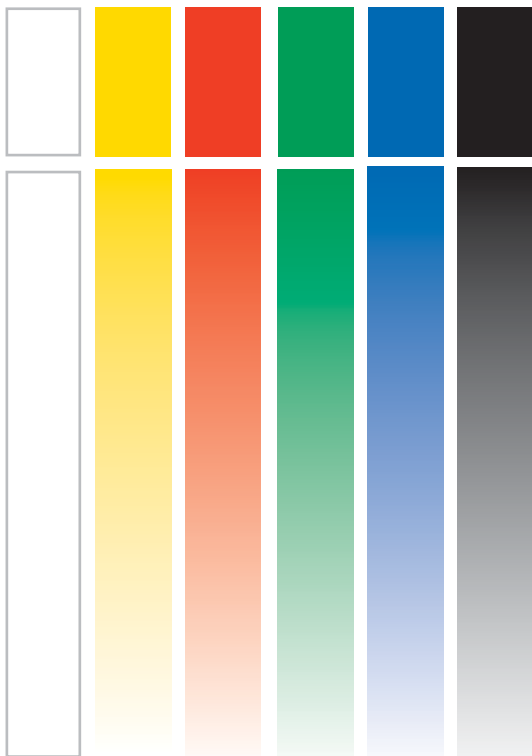
Promote children's participation in active games and play with these bright and interesting games.



Corporate logos



Available in the following standard colours



Standard Games Kit

- Hopscotch 10 No - 30cm/40cm squares.
- Clock 2m diameter.
- Alphabet Jump 26 No. - 30 cm squares.
- Circles 1-3metre diameter.
- Snake 15 No. - 35cm sections.
- Compass 3 metre diameter.
- Set of shapes (square, pentagon, circle & triangle) 1metre x 1metre overall.

The kit represents the most popular playground designs. Wide variety of games and logos can be sold separately.

Please note panels and photographs shown give an indication of colour, do not use for colour matching.



FLEXILINE

Preformed thermoplastic road markings

Installation Guide

Flexiline application has been designed to be as quick and as easy as possible. Permanent markings can be easily achieved by one person and a gas torch.

Ensure the surface is clean, dry and free from dust, dirt or debris. Warm the road surface over the area to be laid. Remove the plastic protective film and place the markings into position and ensure they are 'butted' up correctly and straight. Position nozzle of blowtorch 4-6 inches above the centre of the marking at one end. With a side to side motion, heat the material gently until it begins to bubble and flow and into the surface. Probe the edge with a metal spatula or knife to ensure the contact face of the marking is fully bonded to the surface. Repeat the procedure over the rest of the marking. For initial retro-reflectivity, glass beads can be applied to the line during heating. Allow to cool, if fast cooling is required water can be sprayed over to assist. Full application instructions are available from Prismo.

CP Primer should be applied to the following surfaces before applying Flexiline: concrete, old tarmac and polished asphalt or previously dirty surfaces, which have been thoroughly swept. We do not advise application of Flexiline onto new asphalt until the surface has settled for at least 6-8 weeks. Flexiline is not suitable for application onto blocks.

Where the condition of the surface is in doubt we suggest that a test patch is carried out before completion of the entire job.

Application options

Self Application

Prismo's unique Flexiline product allows for the self application of product for projects. Available in many colours and any shape, Prismo can offer assistance and advice for those who are competent to apply thermoplastic.

Contracting

Prismo Road Markings have been manufacturing and laying road markings for the past 75 years. With this experience, Prismo's teams can complete work efficiently and to budget, providing peace of mind and satisfaction for our customers.

For more information contact Prismo Contracting Services on 0845 688 0155.

Methodologies, technical information/advice and full application instructions are available from Prismo Traffic Products, please call 01761 414824 for any enquiries about Flexiline and how it could help your project.

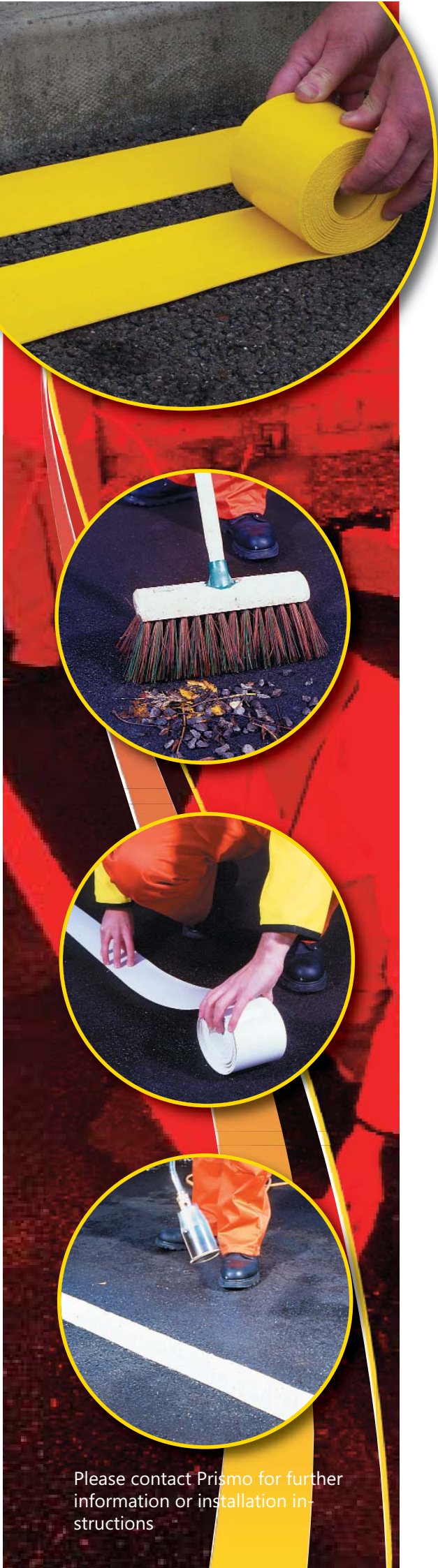


Tack coat, glass beads, gas torches and other associated equipment available.



Prismo

Quality Reflects



Please contact Prismo for further information or installation instructions

